

B&M



‘Constructing
an efficient
tomorrow’

About us

We at B&M Infra excel in the business of constructing an efficient tomorrow. Each season brings with it a multitude of changes in the field of construction; particularly in the preferential mindset of discerning consumers. As a general contractor and builder with roots in Kochi, we greatly appreciate and work in tandem with these recurrent changes. Where our projects are concerned, we adopt a foresighted approach which illuminates future sustainability, ecological soundness and safe practices both in the workplace and the environment. Backed by a credible, transparent workforce and an unstinting passion for quality performance since 2018, B&M is a construction, rental and facility management force to be reckoned with

Range of Services include

- Contracting (Residential, Commercial, Warehouse)
- Rentals management & managed services
- **Projects**
 - o Baleyam
 - o Entae thottam

Brand Promise

With B&M, your vision of a perfect home/office becomes a reality, crafted with precision. As an accountable builder, we promise hassle-free delivery & unwavering after-sales service. When you choose us, you choose a partner who is dedicated to building not just structures, but lasting relationships built on trust and excellence

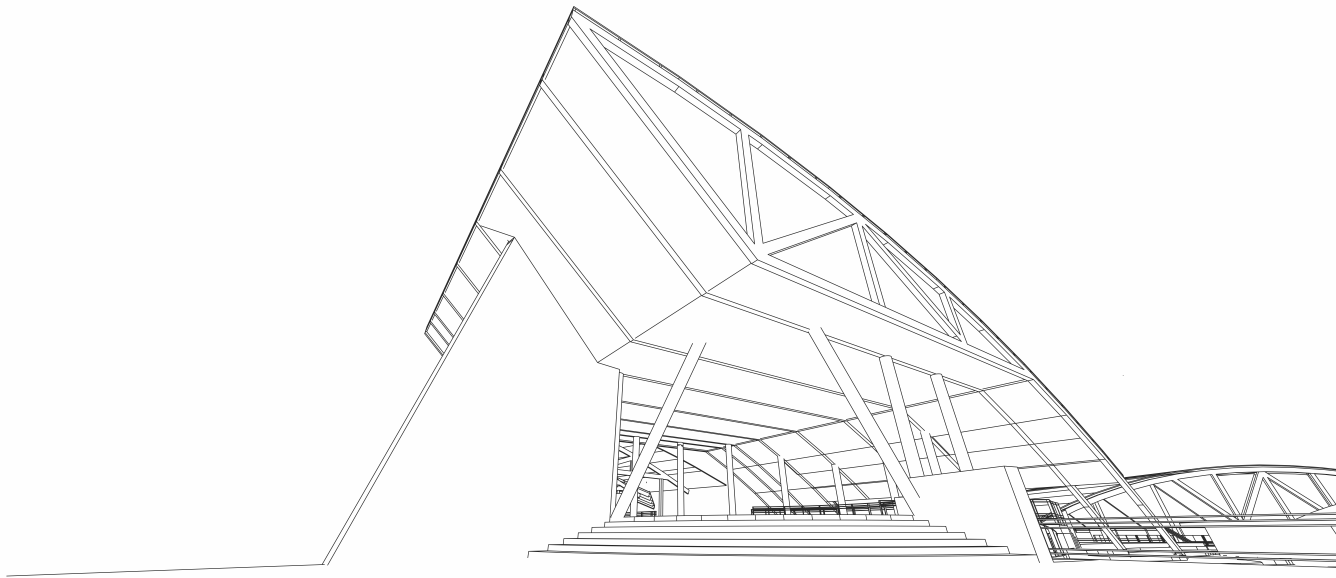


Mission

At B&M Infra, we're committed to creating a new tomorrow through creative and innovative building solutions that correspond with changing customer desires and environmental practices. We seek to create places that are connected with nature, and our foundation is built on long-term quality and honesty. Our unique services, designed to increase property value and assure a high return on investment, demonstrate our commitment to you. With a team of experienced specialists, we collaborate closely with you to achieve the true potential of your property. We're more than a construction company; we are architects of a sustainable future, creating landscapes that represent our constant commitment to quality and environmental responsibility.

Vision

B&M Infra's footprint extends across landscapes and regions, leaving long-lasting impressions. We are rooted in passion and proficiency, and we consistently lead in building, rental, and facility management. Our sincere professionals develop solid relationships while delivering services that exceed customer expectations. We define our position in revolutionary change by making a significant contribution to sustainable development. B&M Infra sees a future in which innovation and integrity come together, having a meaningful, long-term influence.



Values

- **Quality & Integrity:** Uphold the highest standards of quality in all our projects, ensuring durability, functionality, transparency and aesthetic excellence.
- **Sustainability & Environmental Responsibility:** Committed to preserving the environment, reducing our ecological footprint, and promoting sustainable practices.
- **Customer Excellence:** Prioritize customer satisfaction above all else, striving to exceed expectations and create lasting relationships.
- **Creativity & Innovation:** Pioneering new standards in luxury living through creative design and technology.
- **Professionalism & Safety:** Maintain a culture of professionalism, safety, and accountability in all our operations.
- **Community Engagement & Impact:** Actively engage with the communities we serve, contributing positively to their growth and development.

Services



B&M, has ventured into constructing a series of nature centric holiday homes located in various regions of South India. Our range of services include contracting of residential, commercial and warehouse projects as well as property rentals and managed services.

P&M

Contracting

All our contracting jobs follow Project Management processes. This ensures minimal wastage and time bound delivery. Our stage wise reports on work, keeps our customers abreast of the project schedule and budgets.



Residential

A well-constructed home reflects not only ubiquitous beauty but also expert craftsmanship. Our work symbolizes a promise of structural integrity and longevity with no compromise on style.

Commercial

Commercial construction requires an extensive skill set as work is on a much larger scale and employs specialized equipment and manpower. Our capacity for commercial projects ranges from shopping malls and office complexes to hotels and institutions.

Warehouse

Stringent rules and regulations come into the picture where warehouse construction is concerned. Special accommodations need to be made with regard to the products housed. We are equipped to handle projects of this magnitude with utmost precision.

Rentals management & managed services



Renting out a property has quite a few hassles. Selecting and retaining good tenants, drafting agreement contracts, rent collection and more make it a cumbersome task. Our seamless and hassle free services for proficient property and rental management is a forte at B&M. With our expert skill set at your disposal, you can be rest assured that your property is in good hands at all times.

Projects



Baleyam By the river

An indescribable sense of joy and pride goes hand in hand with owning a stunning property. Nestled on the banks of the majestic Periyar is a serene, luxurious space that is comfortingly familiar and truly yours. Presenting Baleyam- by the river, a tranquil community of luxe holiday homes situated in picturesque Marampally. Baleyam is where you can to celebrate life with your loved ones. Delightful amenities and services takes your holiday indulgence, a step further.

Projects



Entae thottam comprises of an eclectic collection of holiday homes where natural beauty takes center stage. These luxurious, fully furnished second homes are located in pristine landscapes- from stunning mountain ranges to sparkling rivers. The idea is to commune with nature and spend a wonderful holiday basking in serenity.

The properties consist of villas in larger estates, which have common arable land. Irrespective of occupancy, the homes will be kept secure and well maintained by the management. Entae thottam also presents an extremely viable investment opportunity as the properties can be rented out when not in use.



Testimonials

I contacted B&M for a client requirement to construct a lake at one of their resorts. Despite his hectic schedule, B&M founder, Mr Keerthy made the time to meet the client and carry forward the project in spite of the site being a tough one. The team managed to find good construction solutions. They also attended my colleague's residential project, where his new house was facing several issues. Without any reluctance, Mr Keerthy and his team visited the site and proposed suitable solutions. All this was possibly only because of the level of expertise with which they operate. I highly recommend them for any construction and contracting jobs, as well as development and maintenance needs

Yadhunandhanan, MD, Data Teknics

B&M is a highly trustworthy brand to enlist your construction requirements with. They are currently constructing a warehouse for Home Centre and I am extremely comfortable with the way work is progressing. Everything related to design, procurement, budgeting and construction are handled by Mr Keerthy (founder) and his team. As the construction project is moving smoothly, I have been able to pay better attention to my core business. Thank you B&M for the great support! I would strongly recommend them for any construction related matters-

Bobby Thomas, MD, Home Centre

I would like to express my gratitude to B&M for the excellent work carried out when undertaking the construction contract of our warehouse. The same was completed on schedule and within the budgeted cost. Thank you Mr. Keerthy Baben for the close follow up efforts on your part. I sincerely recommend and vouch for B&M

Varghese Jose, Partner, VBV & Associates

B&M Infra was our building contractor. All our building requirements right from procurement to finishing were completely handled by them. The brand is reliable and work gets done beyond expected standards. Thank you for being a pillar of support. I would certainly recommend and vouch for the brand and its founder Mr Keerthy Baben-

Dr. Bindu Rachel Thomas, Director, Joy's Dental Clinic

Promoter



A myriad fields of interest and excelling in each one ventured into; Keerthy, founder of B&M makes it look effortless. Born into an agricultural family hailing from Kaavalam, Keerthy, has the love of land running through his veins. In fact, this desire to reclaim and create was handed down generations straight from his grandfather Mr.Pallivathukkal Mathachan, a pioneer in land reclamation who as a matter of fact, reclaimed and developed the last island in Puthenkayal.

Keerthy's education was centered around tourism & management. He started his career in corporate HR and later managed large-scale plantations of the BK Birla group of companies. Keerthy later moved back to Kerala and began working in tandem with Great India Tourism Consultancy services while managing his own family estate in Pathanamthitta.

In 2015, he bought over Perfect Holidays, a travel and tours enterprise that furthered his interest in hospitality. Though he has a strong background in tourism and hospitality, Keerthy's interests are expansive and his passion for construction blossomed after building his house in Thrikkakara. This passion paved the way for B&M Infra Ltd and the construction of their first commercial property in 2018. Apart from generating waves in the construction and business world, he also finds immense joy in surrounding himself with lush, natural beauty.

Amalgamating three unique fields on interest under a single umbrella brand isn't an effortless task but Keerthy's staunch belief and enthusiasm brought the three worlds together thus paving the way for B&M's latest offering: 'Entae Thottam'- a range of nature forward, luxury holiday homes.

Contact US

INDIA CORPORATE OFFICE

B&M Business centre

Mavelipuram, Kakkannad, Kochi

Kerala: 682030

+91 9605089089

admin@bnminfra.com

Dubai

+971 50 889 5433

USA

+1 (951) 317 - 3427

